

# Apple Watch Series 7 6 5 4 3 2 1

Apple Watch :

- Apple Watch 38 / 40 / 41mm 42 / 44 / 45mm
- CBIW475.
- Apple Watch Series 7
- Apple Watch Series 6
- Apple Watch Series 5
- Apple Watch Series 4
- Apple Watch Series 3
- Apple Watch Series 2
- Apple Watch Series 1

Apple Watch Series 7

Apple Watch Series 6

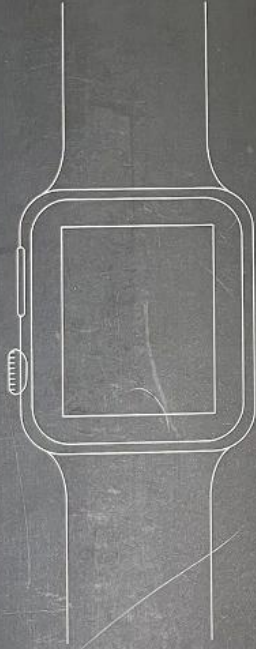
Apple Watch Series 5

Apple Watch Series 4

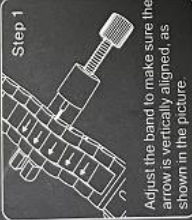
Apple Watch Series 3

Apple Watch Series 2

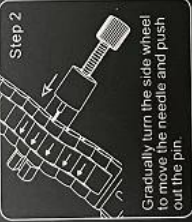
# PREMIUM STAINLESS STEEL BAND



## User Guide



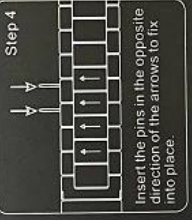
Step 1  
Adjust the band to make sure the arrow is vertically aligned, as shown in the picture.



Step 2  
Gradually turn the side wheel to move the needle and push out the pin.



Step 3  
Adjust the length by removing the extra band(s).



Step 4  
Insert the pins in the opposite direction of the arrows to fix into place.

42MM-22\*22-钢  
铁侠钢带-银色-X

 Small parts are included, please keep out of reach from children.

Made in China 

**Note:**  
1. Please rotate the tool gradually, avoid using too much force as it can break the pin;  
2. Please replace the broken pin with the spare one.



**#1 Silver**



**#2 Black**









