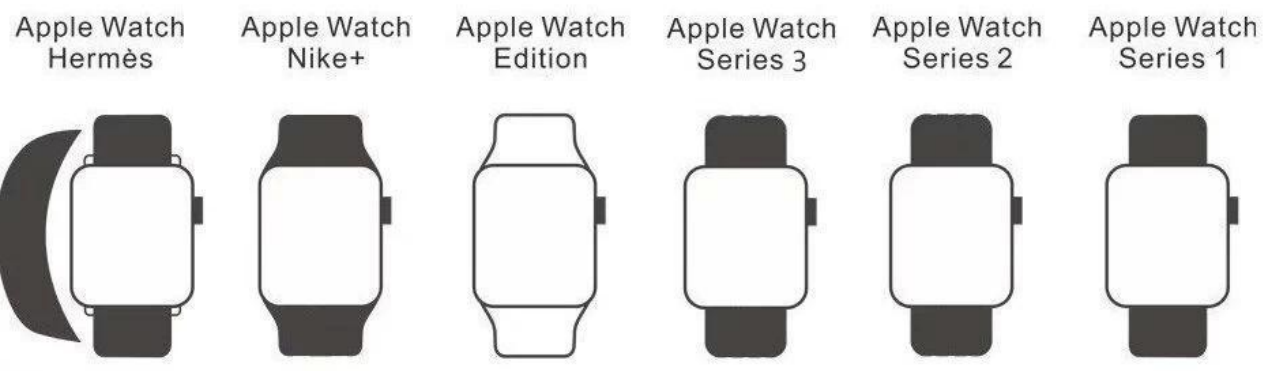


Apple Watch 錶帶 更換 說明書



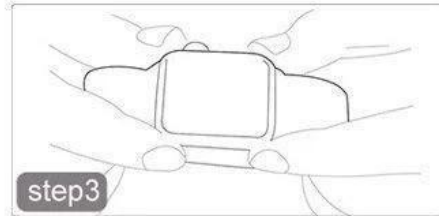
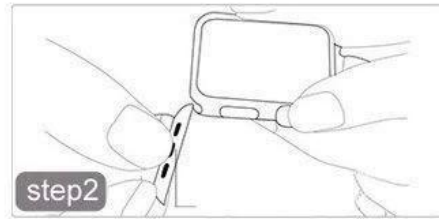
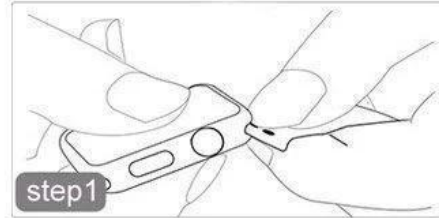
- 注意事項：
- 請在更換錶帶前，先將錶殼清潔乾淨。
 - 請確保錶殼背面與錶帶背面完全接觸。
 - 40mm 130-200mm 錶殼
44mm 140-210mm, 160-245

- 更換步驟：
1. 將錶帶從錶殼背面取下，並將錶帶背面與錶殼背面完全接觸。
 2. 將錶帶背面與錶殼背面完全接觸。
 3. 將錶帶背面與錶殼背面完全接觸。請確保錶帶背面與錶殼背面完全接觸。
 4. 將錶帶背面與錶殼背面完全接觸。請確保錶帶背面與錶殼背面完全接觸。

5. 0000 000 000000,0 000 000 00 000 00 000 00 00 00 0 0000.







Easy to Install or Remove

Precise and secure for Apple Watch

SOFT SILICONE

Made from a custom high-performance silicone, flexible and lightweight.



Pin-and-tuck clasp

easy wrap/ unwrap.

