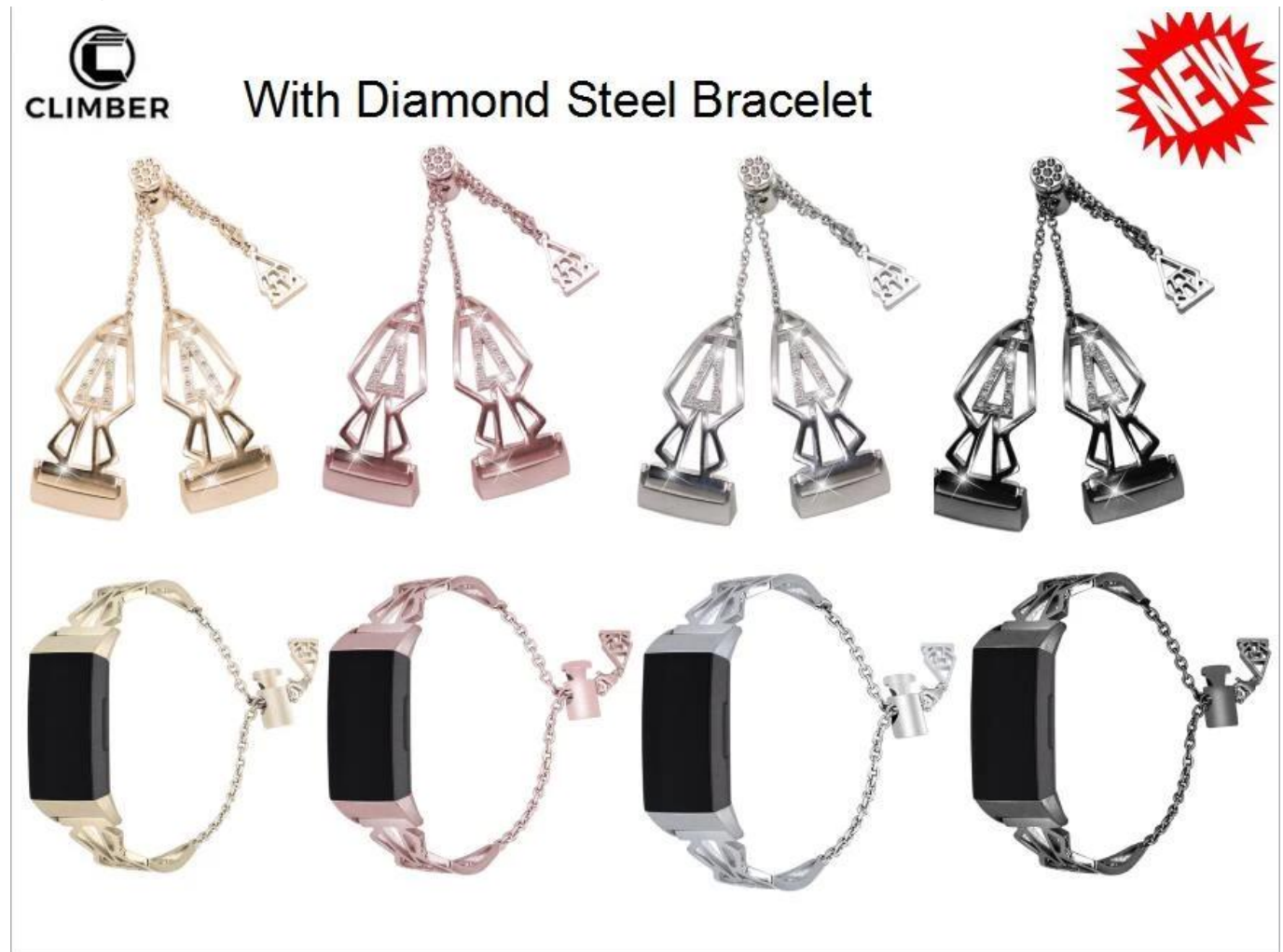


Women Stainless Bracelet Band Decorated with Rhinestone For Fitbit Charge 3



Design

- Christmas-tree Shaped Design
- Decorated With Rhinestone
- With Pendant Tassel

Features

1. Premium stainless steel, with bling rhinestones
2. Designed with Pendant and Tassel, Elegant and luxury
3. Just pressing the pendant locking position on the Tassel to fit for you without needing the tool.
4. Stylish and classic look suitable for any occasion, such as sports, work, dress, leisure, party, traveling and so on.









