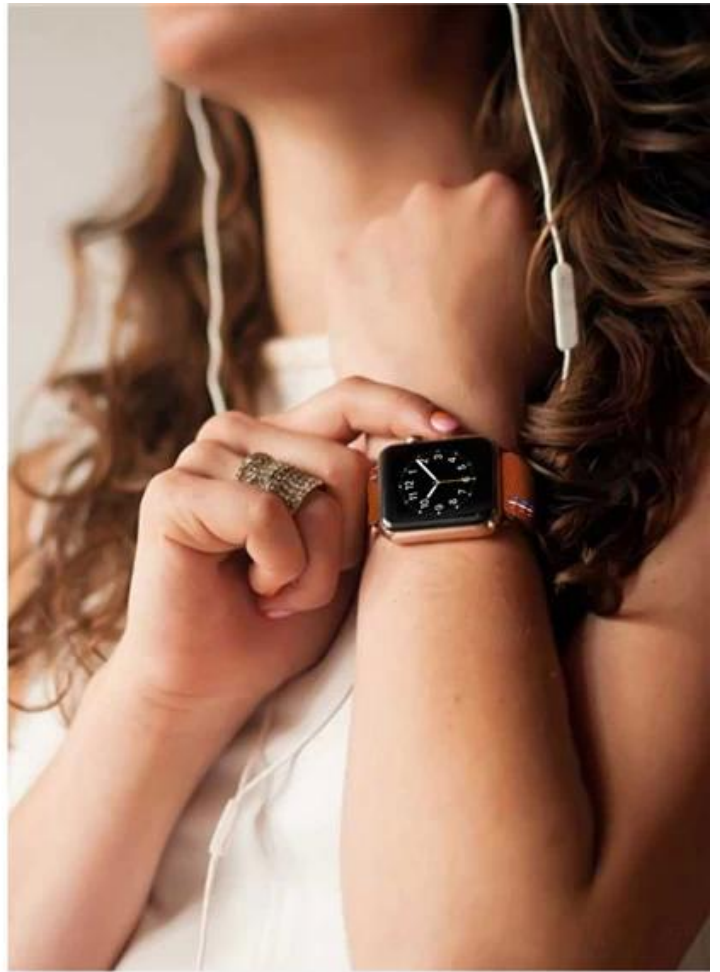


## iWatch Genuine Leather Watch Band 38mm 42mm 40mm 44mm



*fashion*

### Design □

- Fits wrist sizes from 5.5 to 7.8 inch
- Length 11.5+7.5CM
- Weight 30g

### Features □

1. Elegant genuine leather bands with polished stainless steel buckle
2. Weighs light & soft to touch, you may even forget you're wearing it
3. Leather strap with unique design concept and the perfect combination of Apple Watch, you wear it to highlight your noble temperament.





*Band slides  
on the watch easily*





*Band slides  
on the watch easily*





*Band slides  
on the watch easily*





*Band slides  
on the watch easily*





## COMFORTABLE AND STYLISH



1

Soft Gennune leather

2

Durable leather Fabric

3

Simple But Stylish

