

Adjustable Stretchy Elastics Wristbelt Braided Nylon Solo Loop Bands For iWatch Series 6/5/4/3/2/1

Product Design :

- Compatible Model □For iWatch Series 6/5/4/3/2/1
- Item :CBIW260
- Material : Nylon
- 23 Colors : Black,Blue,Pink,Red,Grey,etc
- Design:Stretchy Elastic Braided Nylon Solo Loop Bands
- Fit Wrists□One size can fit most people's wrists
- Function:Adjust to the wristband size Freely
- Made of high quality Nylon, comes with watch lugs on both sides, easy to install on your watch.

An OEM factory of watch straps

Shenzhen Climber Technology Co. Ltd was established in 2011. We are a professional watch strap OEM factory audited by SGS. Integrating design, manufacturing and sales, we have 9 years' manufacturing experience and have had attended Global Sources trade shows for 3 years.

Professional customization services

Backed by professional supporting team, we have rich expertise in R&D, OEM production and marketing. Customized designs, logos and packaging are all accepted.

Welcome to cooperate with us

We will try our best to provide more creative design, more qualified products and the most reliable services to customers worldwide. For more details, please contact us.



1#
Inverness Green
暗夜橄榄绿



2#
Black
黑色



3#
Red
红色



4#
Atlantic Blue
冷海蓝色



5#
Charcoal
木炭色



6#
Pink Punch
鲜粉色



7#
Sky Blue
天空蓝



8#
Pearl White
珍珠白



9#
Sapce Grey
太空灰



10#
Brown
咖啡色



11#
W-Blue/White
W纹-蓝/白



12#
W-Black/White
W纹-黑/白



13#
W-Black/Red
W纹-黑红



14#
W-Black/Green
W纹-黑/绿



15#
W-Blue/Green
W纹-蓝/绿



16#
Bule Camouflage
蓝迷彩



17#
Z-Blue/Pink
Z纹 蓝/粉



18#
Z-Blue/White
Z纹-蓝/白



19#
Z-Blue/Green
Z纹-蓝/绿



20#
Colorful
七彩色



21#
Z-Black/White
Z纹-黑/白

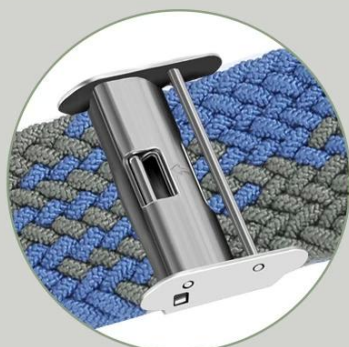
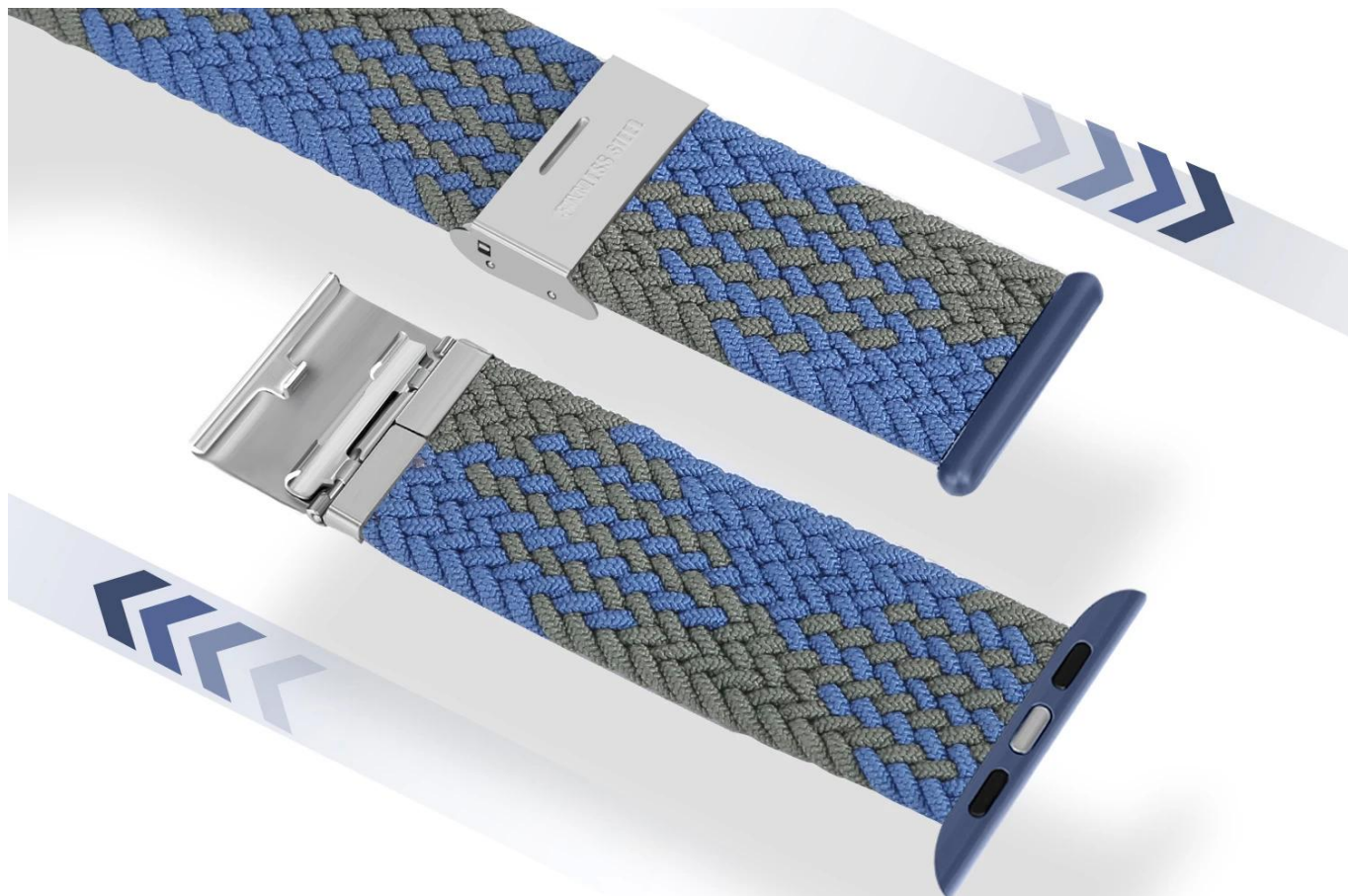


22#
Z-Black/Red
Z纹-黑/红

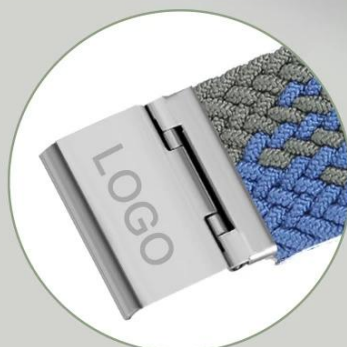


23#
Cowboy Rainbow
牛仔彩虹





Stainless steel material



Logo customization



Adjust at will



FLEXIBLE

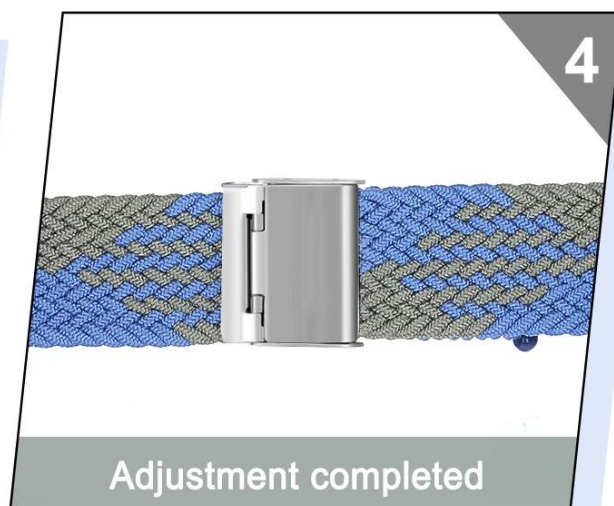
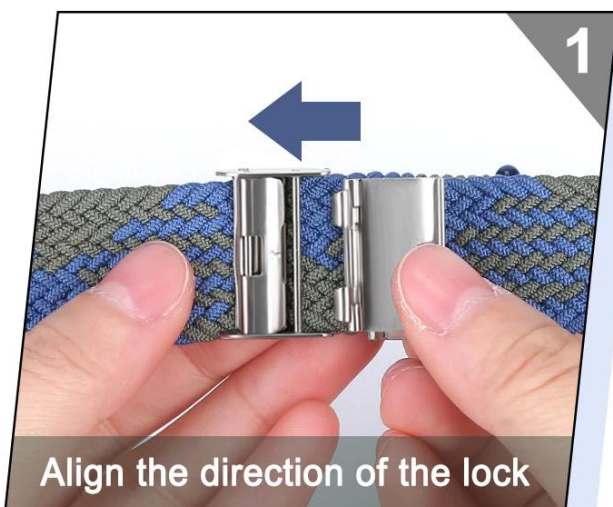
AND BREATHABLE

High-quality woven flexible.
breathable.comfortable
andfriendly to sensitive skins





HOW TO USE



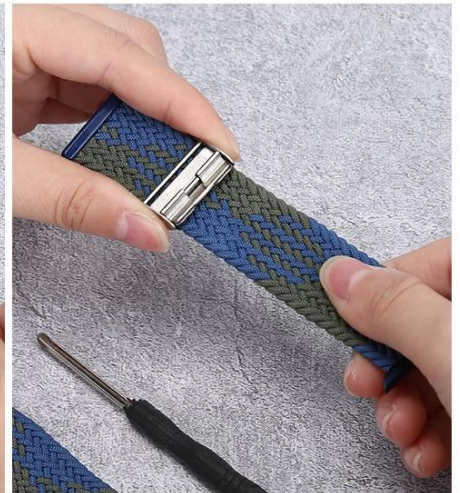
How to Adjust Band Size



Step 1: open the buckle



Step 2 : open up
with the tool



Step 3 : move the buckle to
adjust the fitted wrist size



Step 4 : press down to
fix the buckle



Step 5 : put the bands together and
press down again to lock them firmly