

Milanese Magnetic Watchband Loop Stainless Steel [Wholesale best watch straps](#)

Design □Magnetic Buckle Design Metal Mesh Strap

Features □breathable,Wearable

Functions □

- 1.durable to use, not easy to fade.
- 2.A nice replacement to color your bracelet
- 3.Convenient to take on or off

Service □OEM & ODM Order Acceptable for Low MOQ

Shipment□Air or Sea Shipment

Payment □TT / Paypal / Cash / Western Union / LC

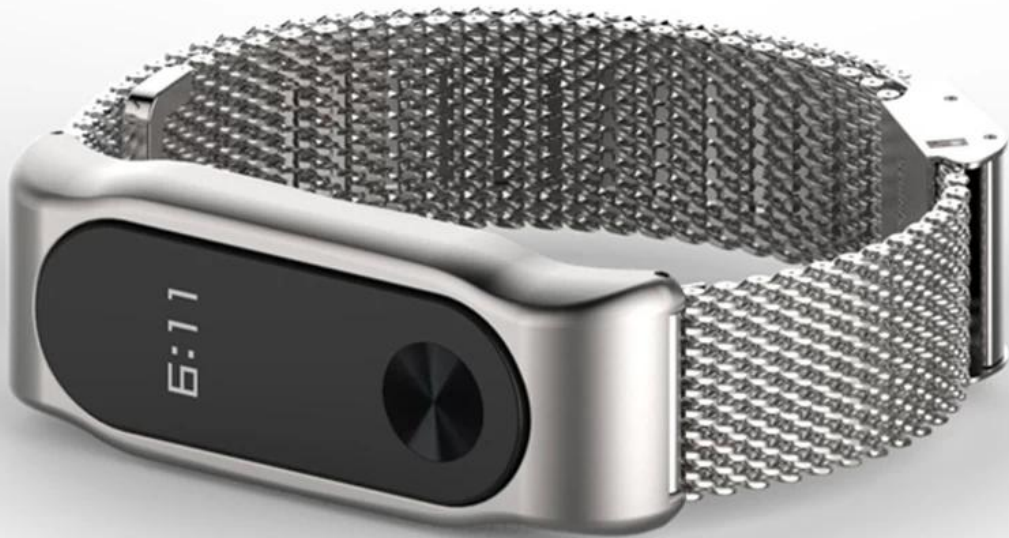
Packaging□Nice Retail Package or Customs Packaging Available

Shenzhen Climber Technology Co., Ltd. is specialized in designing and producing Smart [Watch Straps](#), such as Leather Strap,Stainless steel Bands,Silicone Bracelet or so on.Compatabile For Apple Watch, Xiaomi Band,Fitbit ,Samsung Gear ,etc.Fashional style, suitable for grand events like Business,Wedding, Anniversary, Valentine's Day, Party, etc

Welcome OEM & ODM order,we will try our best to meet all customers differnt requirement. We have rich experience to supply all accessories to online seller. We know how to do labeling , packing for all your goods ship directly to FBA warehouse.High Clear Product Picture surely offer when you order.



Real
Shot



*Not Include Host

PRODUCT IN DETAILS



NO.1

Precise reticulocyte strap

- *Stainless Steel
- *High Quality
- *Mi2 Prototype Mold



NO.2

Craftsmanship

Fit mi band 2 host



NO.3

Magnetic Buckle
Stainless Steel

New Arrival

Series 3

☐ Magnetic Buckle



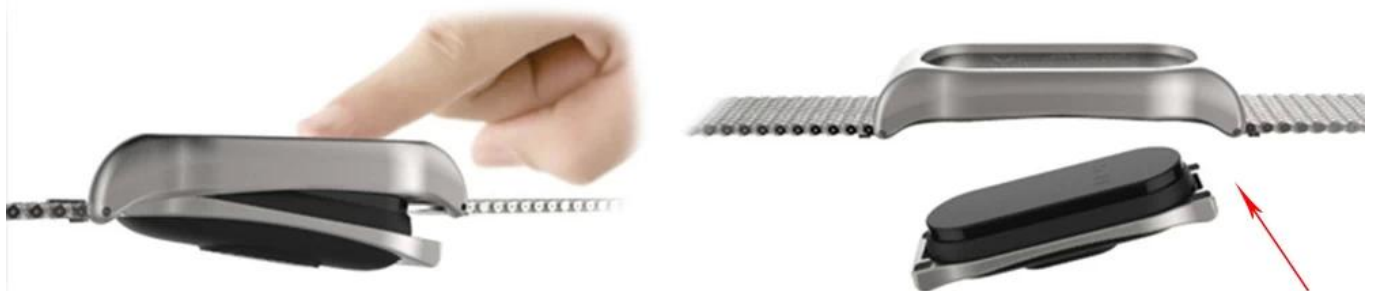
Series 3

Install Guide

Install



open



Mijobs Patent: Magnetic Attraction

How to adjust the clasp tightness?

tight

loose



Outward top is tight, otherwise loose. Due to the normal processing error, the tightness may be individual tight or loose situation, not a quality problem, Can be adjusted in this way. (With tools: chopsticks)

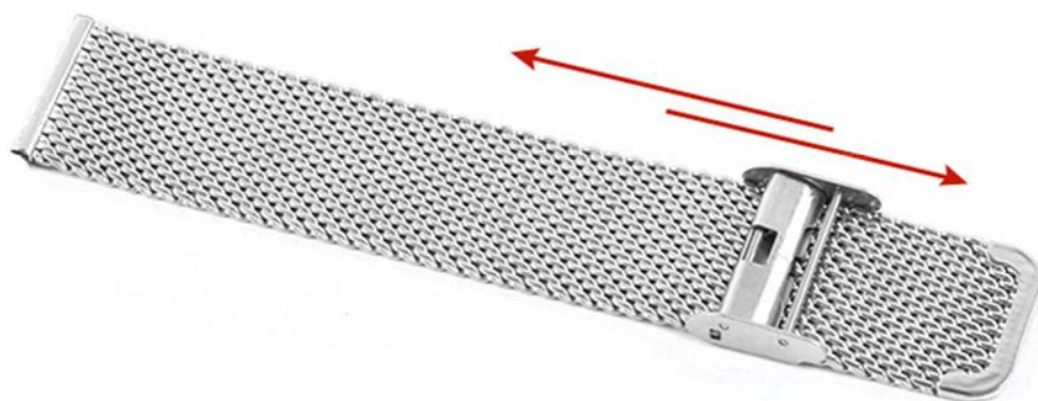
How to adjust the length of the bracelet?



1



2



3



4



5

